

**MOSQUES AND ISLAMIC CENTERS: NEW ELEMENTS IN THE AMERICAN
MOSAIC**

OMAR KHALIDI
AGA KHAN PROGRAM FOR ISLAMIC ARCHITECTURE
MASSACHUSETTS INSTITUTE OF TECHNOLOGY

<okhalidi@mit.edu>

- THE MOSQUE IN AMERICA
- NO ARCHITECTURAL PRECEDENT
- EARLY MOSQUES
- THREE APPROACHES: THREE DIFFERENT PRODUCTS
- SIGNS AND SYMBOLS

The Basic Mosque

- EARLIEST PROTOTYPE: THE PROPHET MOSQUE AT MADINA: FLAT RECTANGULAR SPACE WITHIN THE HOME, PALM LOGS, ADOBE BRICK WALL, FACING KAABA, MECCA.
- 14 CENTURIES OF DESIGN DEVELOPMENT, ACROSS CLIMATES, CULTURES:
- PRIME FUNCTION: CONGREGATIONAL PRAYER; STANDING, KEELING, BOWING, SITTING.
- BASIC PROGRAM: SERIES OF FLAT, RECTANGULAR PRAYER MATS IN A RECTANGULAR HALL. MARKED BY A NICHE IN THE CENTER CALLED MIHRAB FOR IMAM TO LEAD PRAYER.
- OTHER FUNCTIONAL ELEMENTS: MINBAR, MAADHINA, DOME.
- GENDER SPACE
- HISTORIC MOSQUES: NEAR/MIDDLE EAST, TURKEY, IRAN, INDIA & FURTHER EAST.

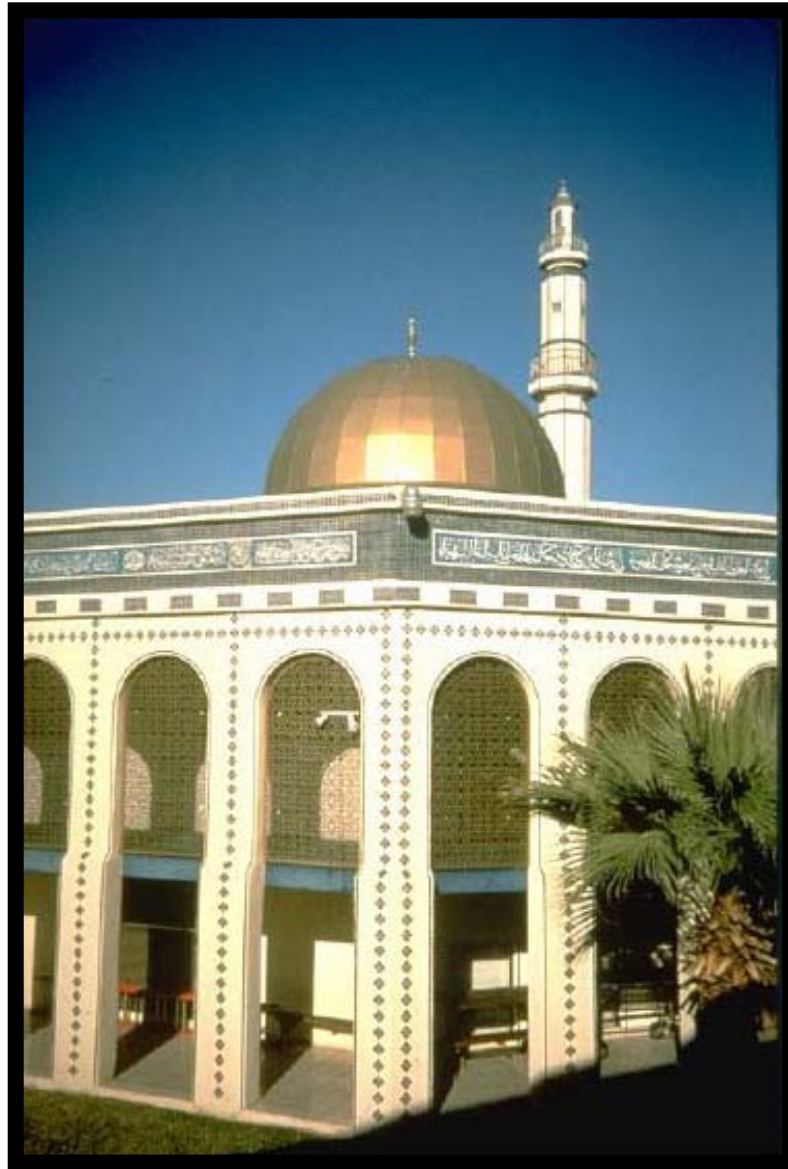
TRADITIONAL "IMPLANTED" DESIGN











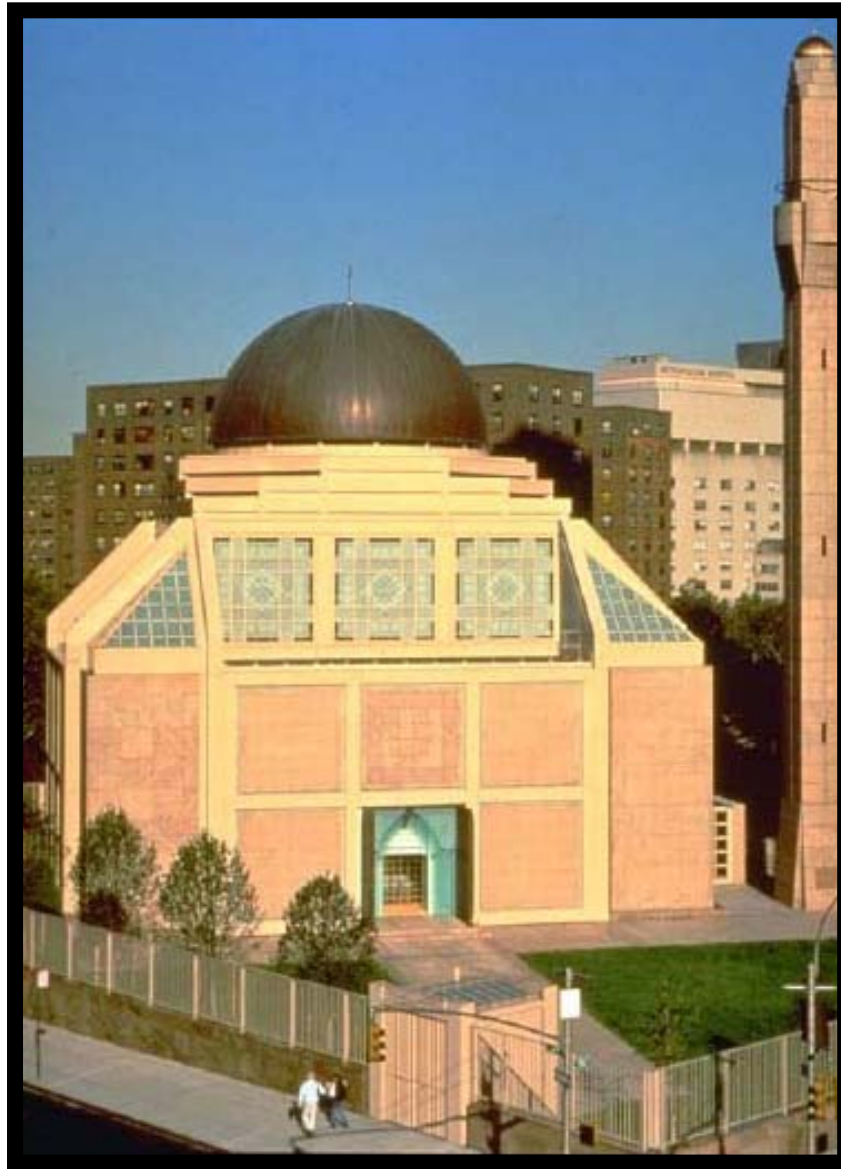


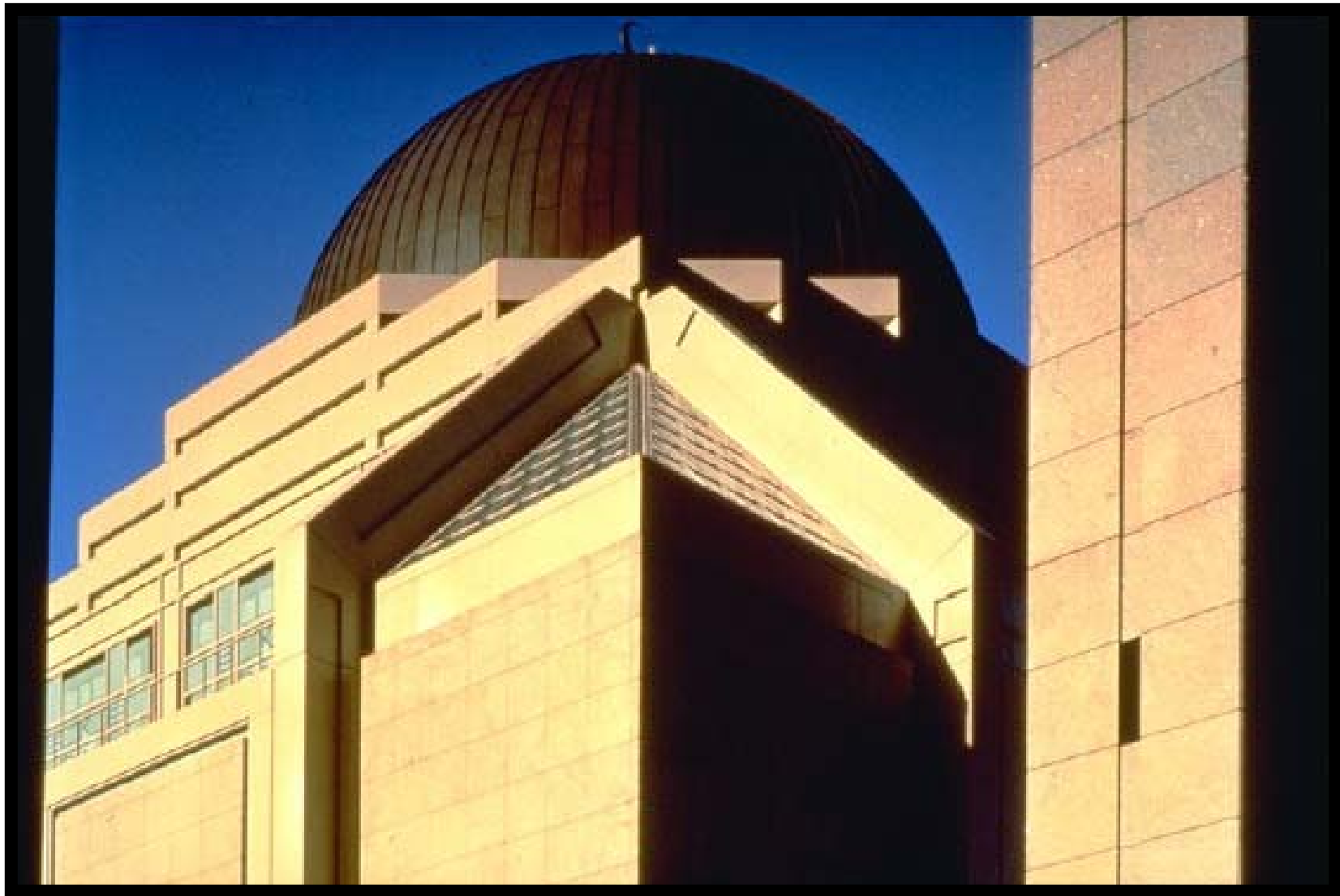




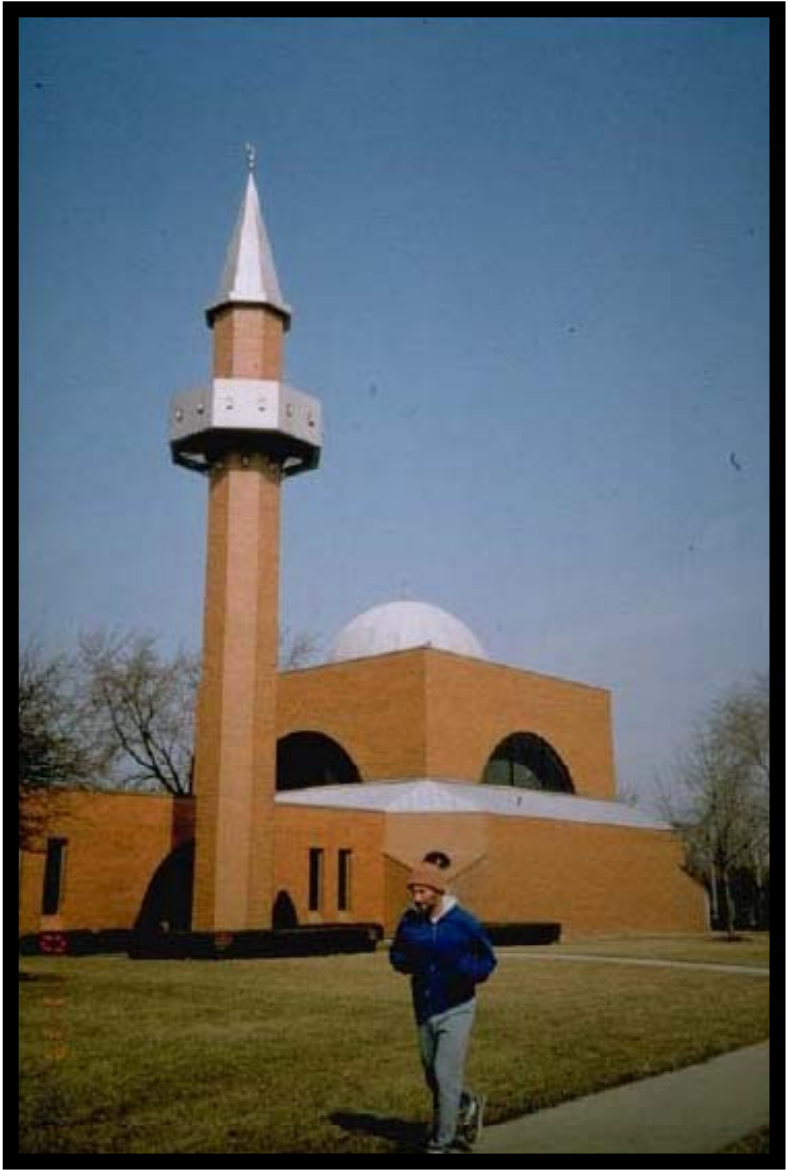


SYNTHESIZED "ADAPTED" DESIGN





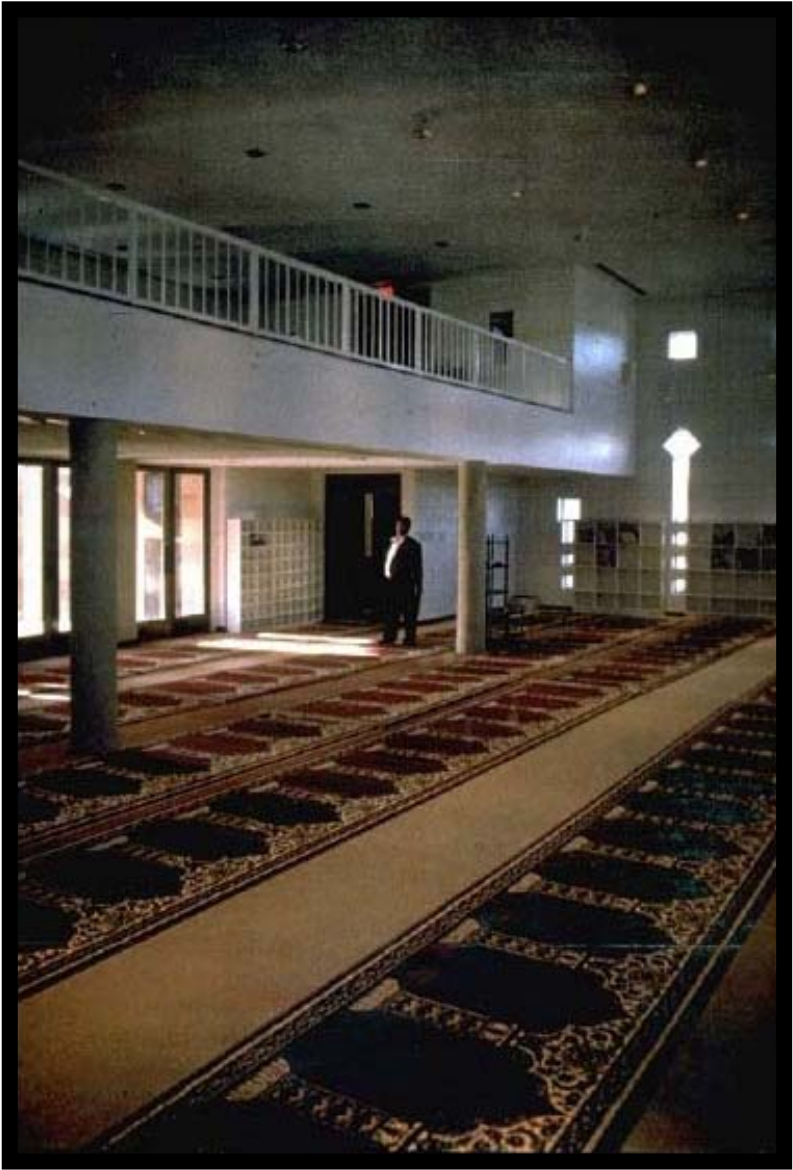


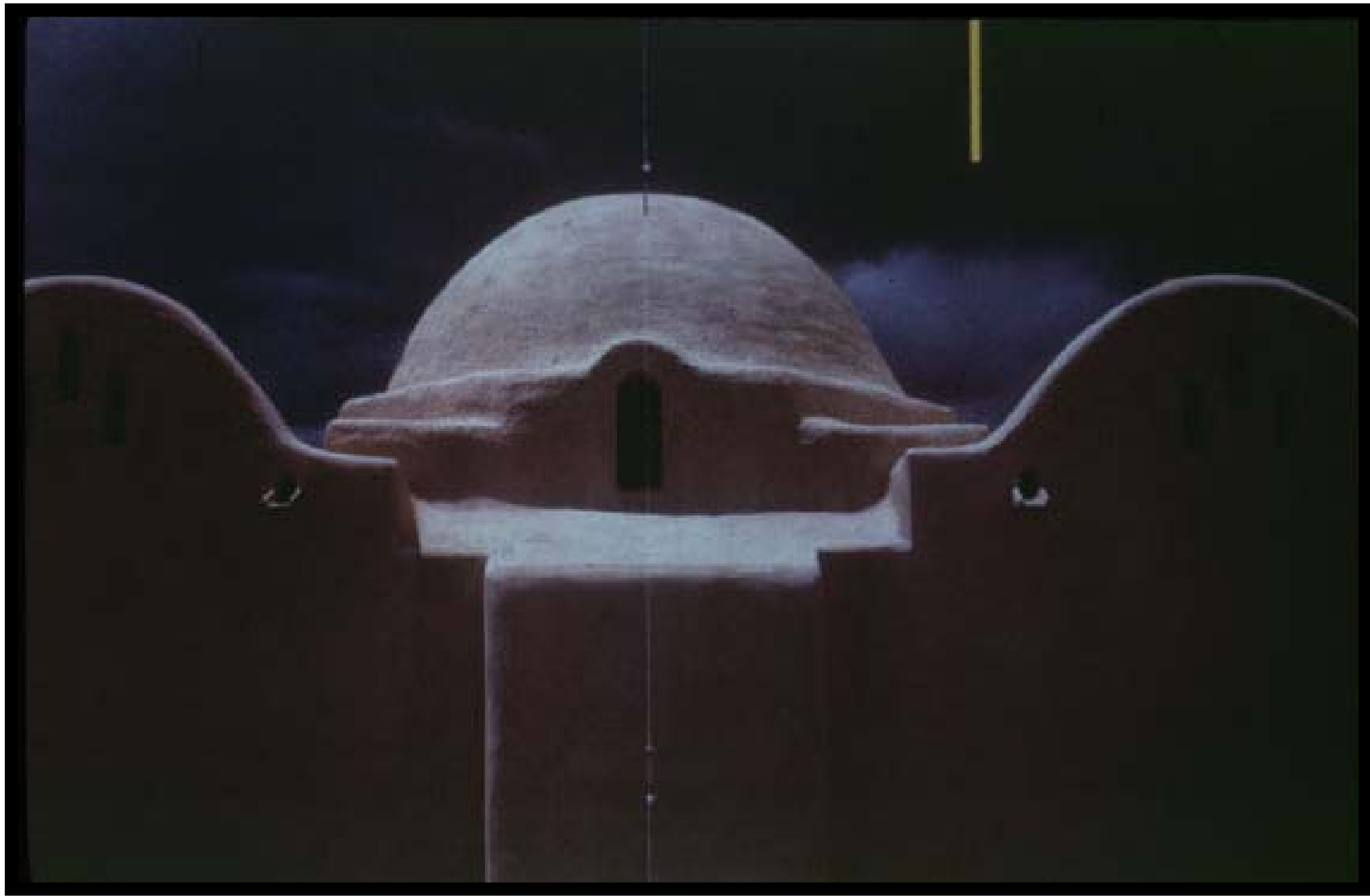










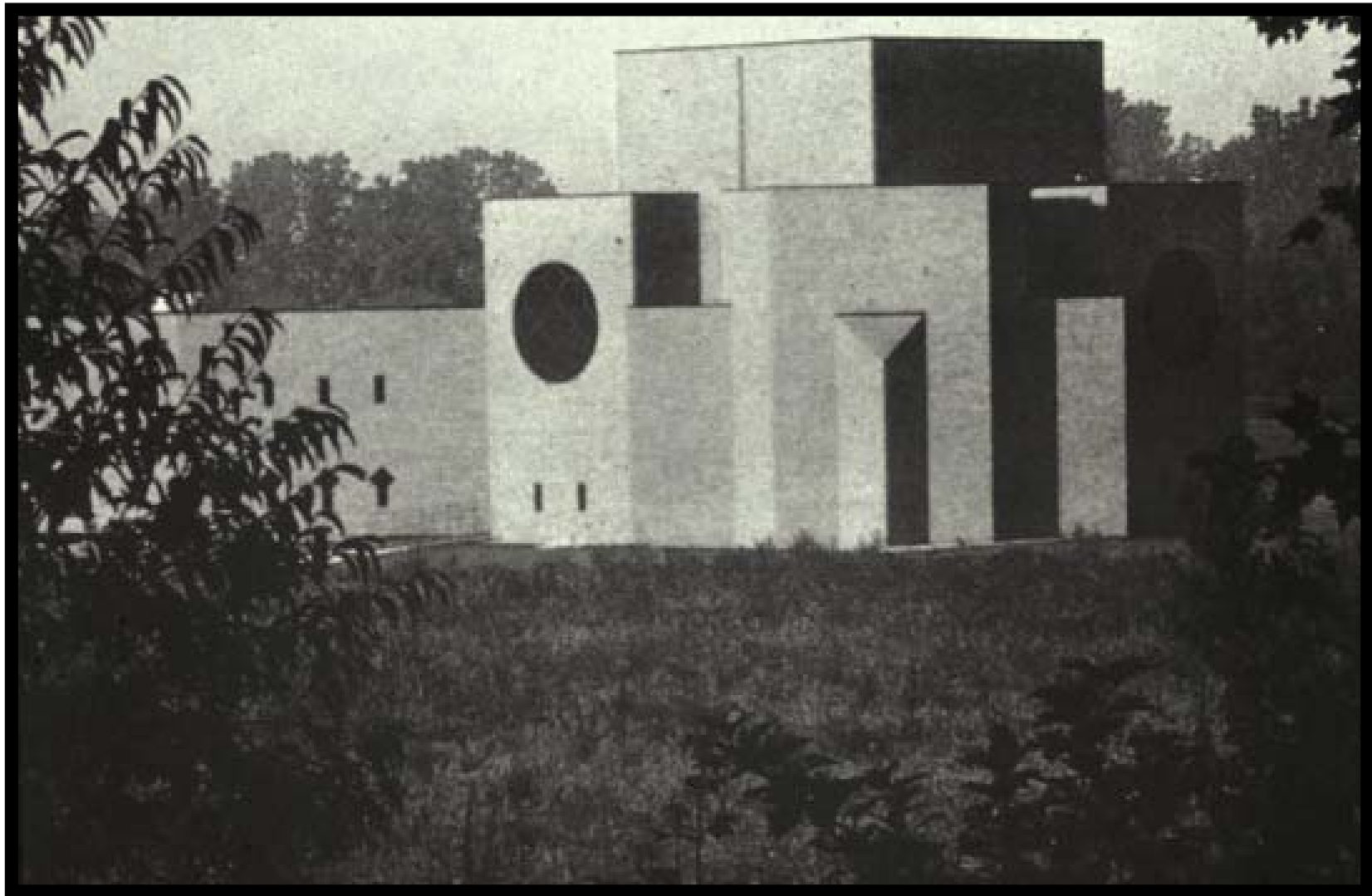


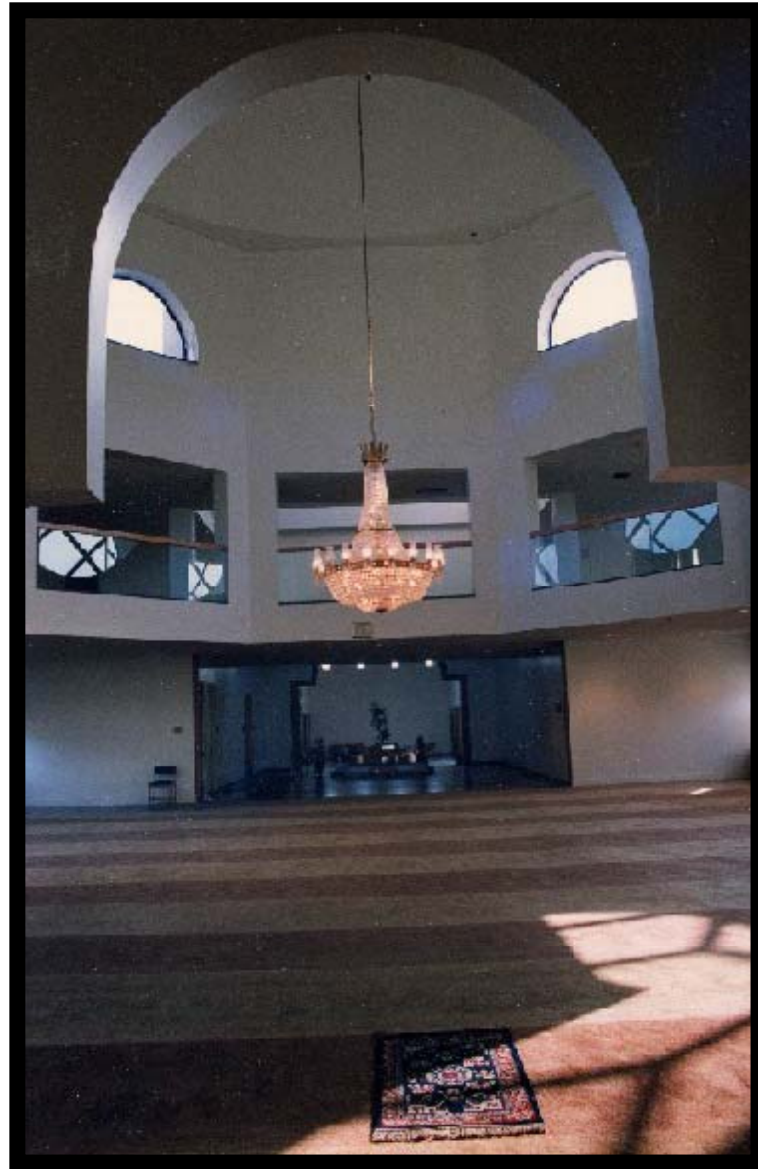


UNPRECEDENTED "INNOVATIVE" DESIGN











SIGNS AND SYMBOLS



